



PARCEL 2, WILLARD ST

LEOMINSTER, MA

FOR SALE | 1.9 ACRES OF COMMERCIAL LAND

JAMES STUBBLEBINE
JUSTIN HOPKINS
DAVID STUBBLEBINE

617.592.3388
808.321.8000
617.592.3391

james@stubblebinecompany.com
Justin@stubblebinecompany.com
david@stubblebinecompany.com



THE
STUBBLEBINE
COMPANY

CORFAC INTERNATIONAL

PROPERTY SUMMARY



PROPERTY DESCRIPTION

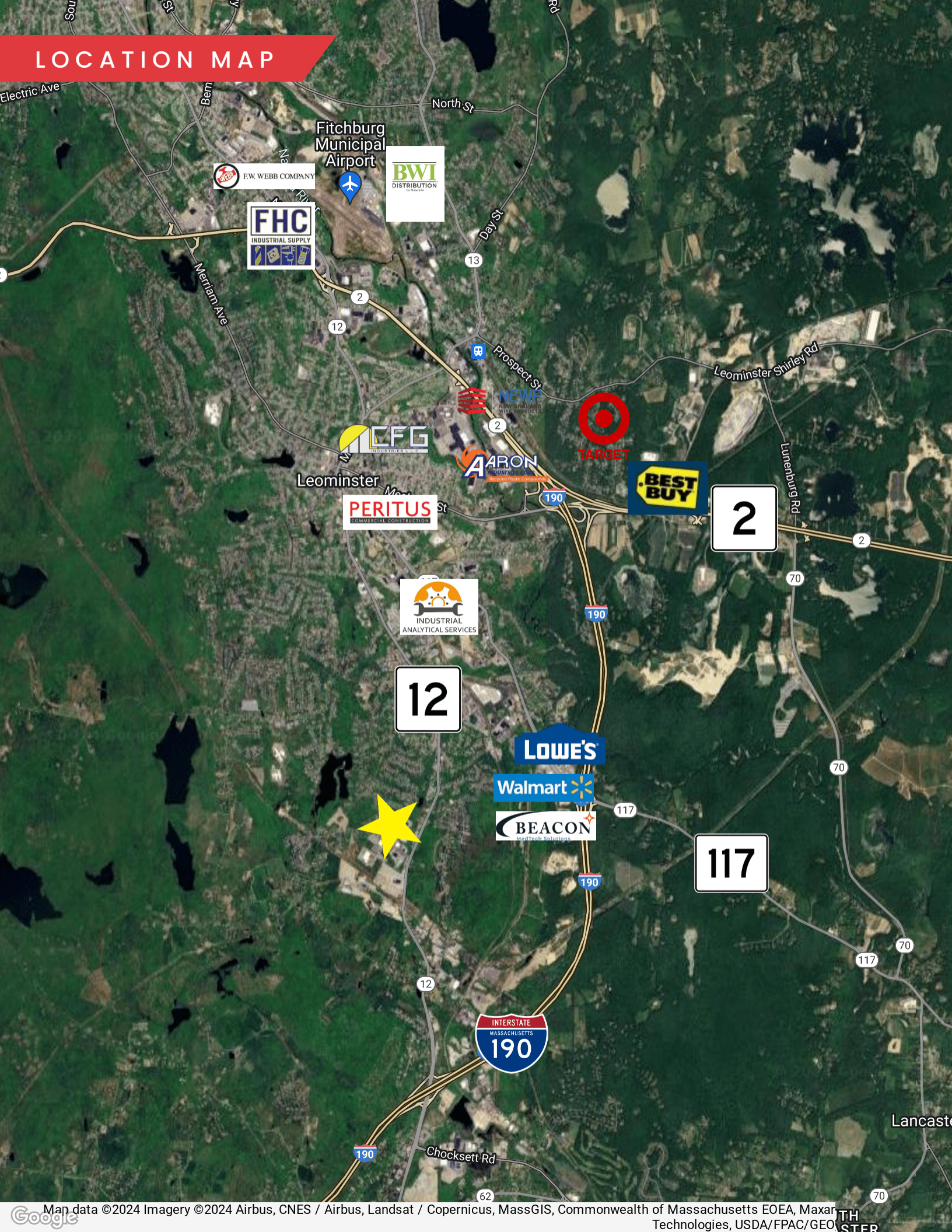
Discover a remarkable opportunity in Leominster, MA, with this 1.9-acre industrial parcel located on Willard Street in Jytek Park. This strategically positioned land offers exceptional potential for development, nestled within a vibrant industrial park. Benefit from the area's robust demographics, boasting a substantial population and high average household incomes within a 3-mile radius and within 2 miles to Highway 190. The site is perfect for developers and users seeking to capitalize on Leominster's growing economy and strategic geographic location.

OFFERING SUMMARY

Sale Price:	Market
Lot Size:	1.9 Acres
Zoning:	Industrial

DEMOGRAPHICS	3 MILES	5 MILES	10 MILES
Total Households	11,230	21,363	66,205
Total Population	25,687	50,926	163,642
Average HH Income	\$80,402	\$90,943	\$94,049

LOCATION MAP



PARCEL 2, WILLARD ST

LEOMINSTER, MA

FOR SALE | 1.9 ACRES OF COMMERCIAL LAND

JAMES STUBBLEBINE

617.592.3388

james@stubblebinecompany.com

JUSTIN HOPKINS

808.321.8000

Justin@stubblebinecompany.com

DAVID STUBBLEBINE

617.592.3391

david@stubblebinecompany.com

We obtained the information above from sources we believe to be reliable. However, we have not verified its accuracy and make no guarantee, warranty or representation about it. It is submitted subject to the possibility of errors, omissions, change of price, rental or other conditions, prior sale, lease or financing, or withdrawal without notice. We include projections, opinions, assumptions or estimates for example only, and they may not represent current or future performance of the property. You and your tax and legal advisors should conduct your own investigation of the property and transaction.



THE
STUBBLEBINE
COMPANY

CORFAC INTERNATIONAL